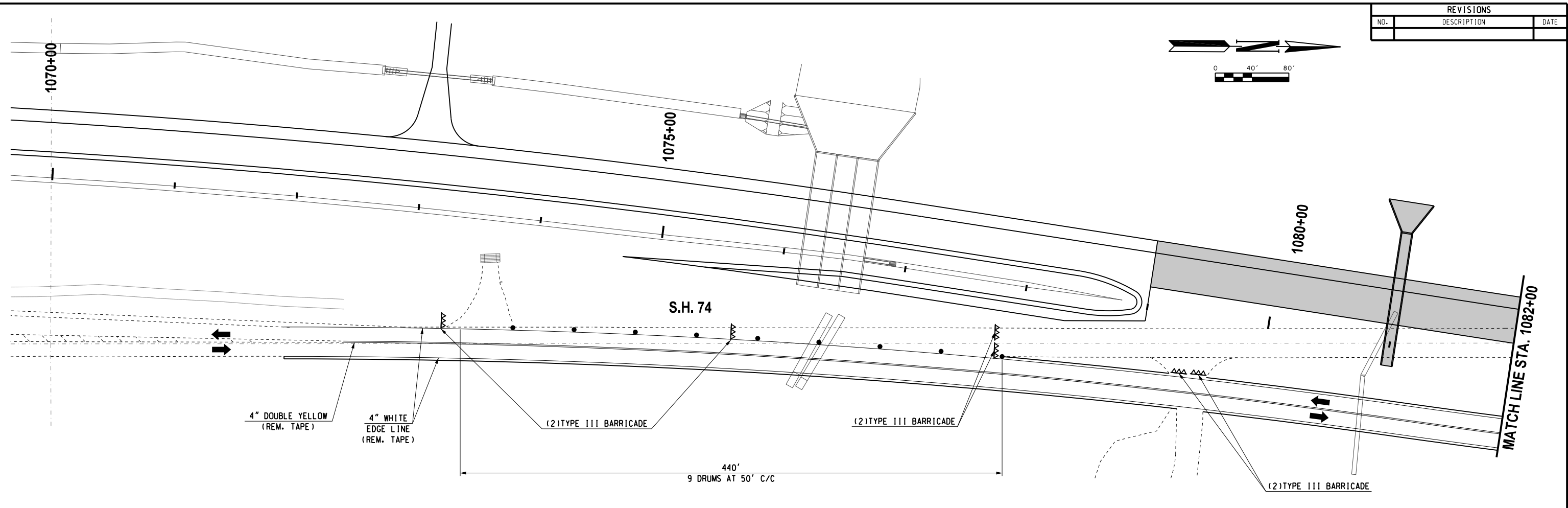
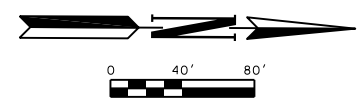


REVISIONS		
NO.	DESCRIPTION	DATE

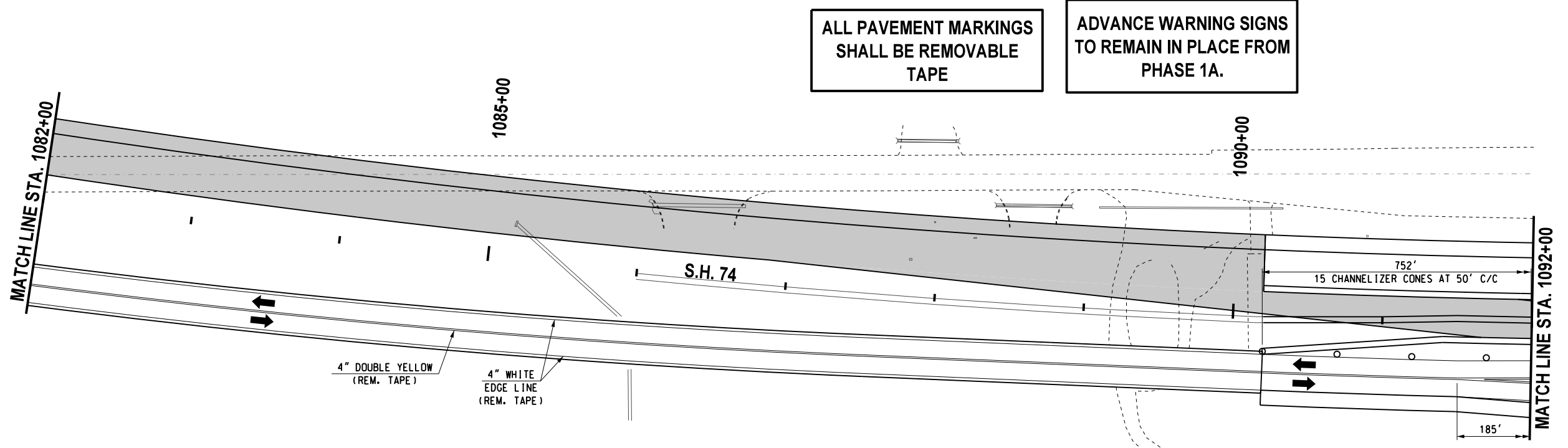


ALL PAVEMENT MARKINGS SHALL BE REMOVABLE TAPE

ADVANCE WARNING SIGNS TO REMAIN IN PLACE FROM PHASE 1A.

CONTRACTOR SHALL KEEP 11' MINIMUM LANES UNLESS OTHERWISE NOTED.

CONTRACTOR TO PROVIDE ACCESS TO ALL DRIVEWAYS DURING CONSTRUCTION.



LEGEND	
△△△	- TYPE III BARRICADE W/ TWO TYPE "A" LIGHTS
●	- DRUM
○	- CHANNELIZER CONE
▬	- PORTABLE CONC. BARRIER WALL
▬▬▬	- CONSTRUCTION ZONE IMPACT ATTENUATOR
■	- WORK AREA

Design	RWR	08/10/17
Drawn	GDB	08/10/17



TRAFFIC CONTROL
PHASES 3L, M & N (SHEET 1 OF 7)
S.H. 74 (STA. 1070+00 TO 1092+00)
 State Job No. 14964(08) Sheet No. 170

08/10/17 G:\Projects\T-1662B SH 74 @ NW 178th, NW 192nd & NW 206th\CAD\TC PHASE 3\MN_L1_S1_74.dgn